

pipa polyethylene

(SNI No. 4829.2 : 2015)



Spesifikasi Pipa HDPE

DIAMETER		AIR MINUM						
		BAHAN HDPE PE 100						
		SNI 4829.2:2015 / ISO 4427 - 2.2007						
DN (inch)	OD (mm)	SDR 41 PN 4 S-20	SDR 33 PN 5 S-16	SDR 26 PN 6 S-12.5	SDR 21 PN 8 S-10	SDR 17 PN 10 S-8	SDR 13.6 PN 12.5 S-6.3	SDR 11 PN 16 S-5
½"	20	---	---	---	---	---	---	2.0
¾"	25	---	---	---	---	---	2.0	2.3
1"	32	---	---	---	---	2.0	2.4	3.0
1-¼"	40	---	---	---	2.0	2.4	3.0	3.7
1-½"	50	---	---	2.0	2.4	3.0	3.7	4.6
2"	63	---	---	2.5	3.0	3.8	4.7	5.8
2-½"	75	---	---	2.9	3.6	4.5	5.6	6.8
3"	90	---	---	3.5	4.3	5.4	6.7	8.2
4"	110	---	---	4.2	5.3	6.6	8.1	10.0
5"	125	---	---	4.8	6.0	7.4	9.2	11.4
-	140	---	---	5.4	6.7	8.3	10.3	12.7
6"	160	---	---	6.2	7.7	9.5	11.8	14.6
-	180	---	---	6.9	8.6	10.7	13.3	16.4
8"	200	---	---	7.7	9.6	11.9	14.7	18.2
-	225	---	---	8.6	10.8	13.4	16.6	20.5
10"	250	---	---	9.6	11.9	14.8	18.4	22.7
-	280	---	---	10.7	13.4	16.6	20.6	25.4
12"	315	7.7	9.7	12.1	15.0	18.7	23.2	28.6
14"	355	8.7	10.9	13.6	16.9	21.1	26.1	32.2
16"	400	9.8	12.3	15.3	19.1	23.7	29.4	36.3
18"	450	11.0	13.8	17.2	21.5	26.7	33.1	40.9
20"	500	12.3	15.3	19.1	23.9	29.7	36.8	45.4
22"	560	13.7	17.2	21.4	26.7	33.2	41.2	50.8
24"	630	15.4	19.3	24.1	30.0	37.4	46.3	57.2
28"	710	17.4	21.8	27.2	33.9	42.1	52.2	64.5
32"	800	19.6	24.5	30.6	38.1	47.4	58.8	72.6

STANDARD / SPECIFICATION FOR HDPE TELKOM DUCT TANAM LANGSUNG STELL - 039 - 2008

Klasifikasi	Ø Nominal (mm)	Wallthickness (mm)	Jumlah Segment / Haspel	
			(m)	(m)
DTL - I	32 / 26	3.0	3200	1600
DTL - II	40 / 33	3.5	1800	900
DTL - III	50 / 42	4.0	1000	500

STANDARD / SPECIFICATION FOR HDPE TELKOM SUB DUCT TUNGGAL STELL - 039 - 2008

Klasifikasi	Ø Nominal (mm)	Wallthickness (mm)	Jumlah Segment / Haspel	
			(m)	(m)
SDT - IA	32 / 27	2.5	3200	1600
SDT - IB	32 / 28	2.0	3200	1600
SDT - II	40 / 34	3.0	1800	900

Data Teknis

BAHAN	HDPE PE 100	MDPE
Density	0.958 g/cm ³	0.940 g/cm ³
Melt Index	0.215 g/10 min at 190 ^o C/5.0 kg	0.2 g/10 min
Tensile Strength	20 Mpa	-
Elongation at Break	Min 400%	> 700%

Standard Panjang Pipa Polyethylene

Diameter (mm)	Meter / Roll		Meter / Batang	
	50	100	6	12
20 - 25		•		
32		•		
40 - 63		•		
75 - 110	•			
125 - 800			•	•

Metode Penyambungan Pipa Polyethylene

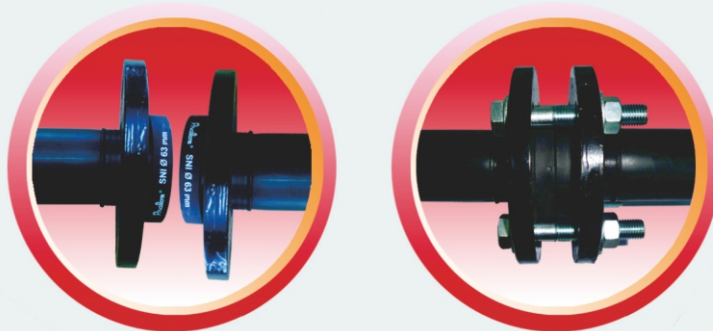
Butt Welding / Butt Fusion



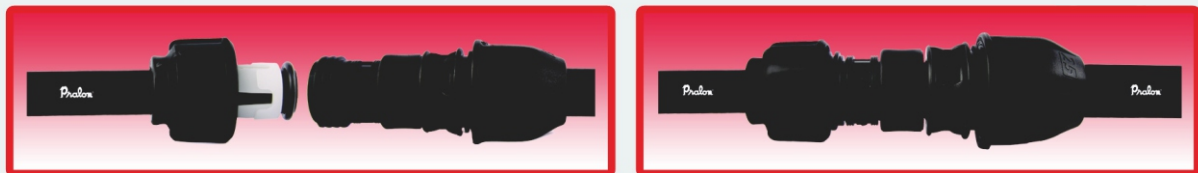
Electro Fusion



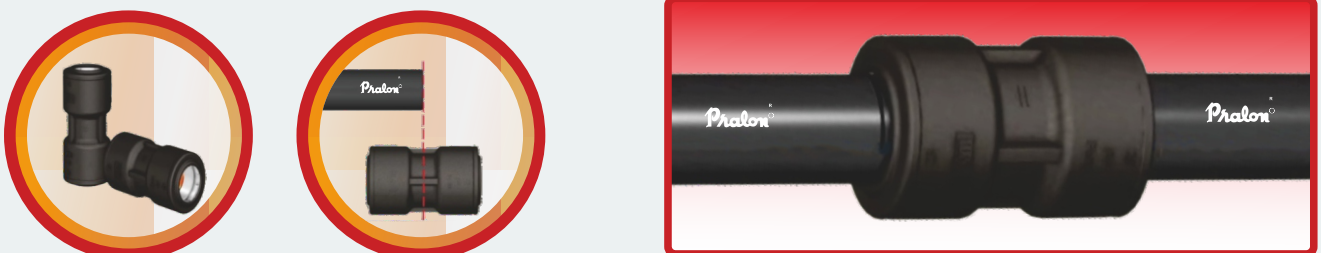
Stub End dan Flange Adaptor



Compression Fittings / Mekanikal Joint



Push On System



Compression Joint



Coupling



Reducer



Elbow



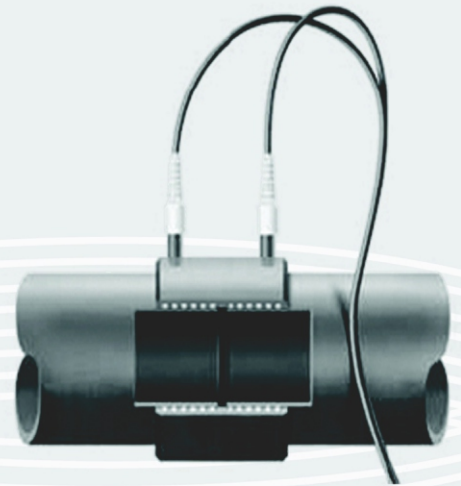
Male Thread Adaptor



Tee



Female Thread Elbow



Segmented



Bend 45°



Stub End



Reducer



Bend 90°



Tee



Tee Reducer

Electro Fusion



Elbow 90°



Socket



Tee



Tapping Saddle



Reducer



Elbow 45°

Distribusi oleh :



PT. PRALON

www.pralon.com

Email : info@pralon.com

Pusat informasi : (021) 304 38808