

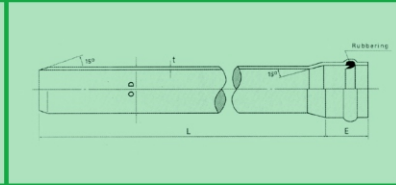


pipa uPVC & fittings

(SNI No. 06-0084-2002 & SNI 06-0135-1987)



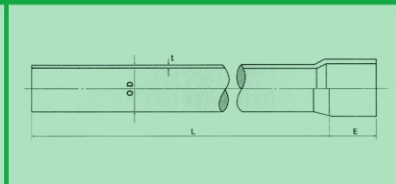
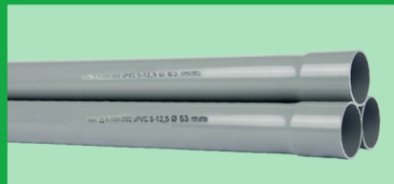
"BELL END" (RUBBER RING JOINT)



Satuan :mm.

UKURAN NOMINAL	NOMINAL OD	SNI 06-0084-2002/ISO 4065-1978					PANJANG STANDARD	
		S-6,3	S-8	S-10	S-12,5	S-16	E	L
50(2")	63	4.7	3.8	3.0	2.4	2.0	115	6000 ± 5
65(2½")	75	5.5	4.5	3.6	2.9	2.3	115	6000 ± 5
75(3")	90	6.6	5.4	4.3	3.5	2.8	125	6000 ± 5
100(4")	110	8.2	6.6	5.3	4.2	3.4	130	6000 ± 5
125(5")	140	10.3	8.3	6.7	5.4	4.3	145	6000 ± 5
150(6")	160	11.8	9.5	7.7	6.2	4.9	160	6000 ± 5
200(8")	200	14.7	11.9	9.6	7.7	6.2	175	6000 ± 5
200(8")	225	16.6	13.4	10.8	8.6	6.9	180	6000 ± 5
250(10")	250	18.4	14.8	11.9	9.9	7.7	195	6000 ± 5
250(10")	280	20.6	16.6	13.4	10.7	8.6	200	6000 ± 5
300(12")	315	23.2	18.7	15.0	12.1	9.7	215	6000 ± 5
350(14")	355	26.1	21.1	16.9	13.6	10.9	260	6000 ± 5
400(16")	400	29.4	23.7	19.1	15.3	12.3	290	6000 ± 5
450(18")	450	-	26.7	21.5	17.2	13.8	320	6000 ± 5
500(20")	500	-	29.6	23.9	19.1	15.3	340	6000 ± 5
600(24")	630	-	-	30.0	24.1	19.3	415	6000 ± 5

"TS END" (SOLVENT CEMENT JOINT)



Satuan :mm.

UKURAN NOMINAL	NOMINAL OD	SNI 06-0084-2002/ISO 4065-1978					PANJANG STANDARD	
		S-6,3	S-8	S-10	S-12,5	S-16	E	L
15(½")	20	1.5	-	-	-	-	37	6000 ± 5
20(¾")	25	1.9	1.5	-	-	-	40	6000 ± 5
25(1")	32	2.4	1.9	1.6	-	-	44	6000 ± 5
30(1¼")	40	3.0	2.4	1.9	1.6	1.5	49	6000 ± 5
40(1½")	50	3.7	3.0	2.4	2.0	1.6	55	6000 ± 5
50(2")	63	4.7	3.8	3.0	2.4	2.0	63	6000 ± 5
65(2½")	75	5.5	4.5	3.6	2.9	2.3	70	6000 ± 5
75(3")	90	6.6	5.4	4.3	3.5	2.8	79	6000 ± 5
100(4")	110	8.2	6.6	5.3	4.2	3.4	91	6000 ± 5
125(5")	140	10.3	8.3	6.7	5.4	4.3	109	6000 ± 5
150(6")	160	11.8	9.5	7.7	6.2	4.9	121	6000 ± 5
200(8")	200	14.7	11.9	9.6	7.7	6.2	145	6000 ± 5
200(8")	225	16.6	13.4	10.8	8.6	6.9	160	6000 ± 5
250(10")	250	18.4	14.8	11.9	9.9	7.7	175	6000 ± 5
250(10")	280	20.6	16.6	13.4	10.7	8.6	196	6000 ± 5
300(12")	315	23.2	18.7	15.0	12.1	9.7	214	6000 ± 5
350(14")	355	26.1	21.1	16.9	13.6	10.9	238	6000 ± 5
400(16")	400	29.4	23.7	19.1	15.3	12.3	265	6000 ± 5

Metode Penyambungan

Rubber Ring Jointing System



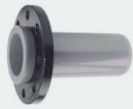
Solvent Cement Jointing System



Bell Fittings



Flange Bell End



Flange Spigot



Dresser Joint



Bell Spigot



Bell Repair Socket



Bell Socket



Bell VA/VC Socket



Bell Long TY Bell Branch



Bell Y Bell Branch



Bell Tee Bell Branch



All Bell Tee



Bell Reducer



Bell S Bend



Bell Tee TS Branch

Bell Bend



90°



45°



22,50°



11,25°

TS Fittings



Clamp Saddle



Flange Socket



TS. Elbow



TS. Cap



TS. Faucet Elbow



TS. Tee



TS. Faucet Tee



Reducer Socket



TS. Faucet Socket



Socket



TS. Valve Socket



VA/VC Socket

Bend



90°



45°



22,50°



11,25°



Slow Dry



Quick Dry



Quick Dry



Distribusi oleh :

PT. PRALON
www.pralon.com
 Email : info@pralon.com
 Pusat informasi : (021) 304 38808